

[SIGN UP NOW FOR PRIME CONNECTION](#)
[UNSUBSCRIBE FROM PRIMECONNECTION](#)

We're Turning 20!

Staff members, families, and friends of Berry Architecture + Associates are excited to be celebrating the 20th Anniversary of our official incorporation next month! Hard to believe it's been 20 years since we began as "G. Berry Architect". We've grown from one architect and one technologist to our current team of 18! Thousands of projects throughout this beautiful province later, and we're still going strong, working hard, and having fun. Next month's issue will be dedicated to highlights from our 20 year history—so stay tuned!



New AHS Projects—Wi-Fi Upgrades

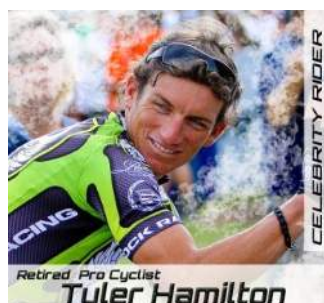
We have completed several projects for Alberta Health Services in recent years—we just wrapped up the relocation of the Addictions and Mental Health Services departments in Wainwright and a hospital roof replacement. Now we are undertaking Wi-Fi and data room upgrades at five hospitals—Sundre, Olds, Innisfail, Rocky Mountain House, and Rimbey. We are pleased to continue working with AHS and to expand our growing portfolio of hospital renovation projects.



L-R, Sundre, Olds, Innisfail, Rocky Mountain House, and Rimbey Hospitals

Wellness Ride Update—August 11, 2018

We are getting geared up for the 10th installment of the Berry Architecture Community Wellness Ride. We are so pleased to be celebrating the 10th anniversary of this event and are hoping for an excellent turnout. Route distances cater to all abilities—10 and 25 km distances on Red Deer bike routes and 50 and 100 km routes on the highway. This year there will be a challenge route available to the 100 km riders, with two portions of Alberta pavé (gravel) for those who want to experience the Alberta version of Paris-Roubaix. We are thrilled to have Tyler Hamilton and Alex Stieda join us again as our celebrity riders. Thank you both for your ongoing support and commitment to our ride! There will be a barbeque upstairs on our green roof following the ride. Visit www.wellnessride.ca to register or sponsor a rider.



STAFF NEWS CORNER

MS Golf Classic



L-R, Tammy, Aaron, and Isaac

Berry Architecture sponsored the first hole (longest drive) at the MS Society Golf Classic on July 16. We also fielded an awesome team of Tammy Dowding, Gary Dowding, Aaron Lucas, and Isaac Martinez. Thanks, team! It was a lot of fun, and we were able to support a great cause. Funds raised support Canadian MS research as well as programs and services for those affected by MS in Central Alberta.

NAME THAT ARCHITECTURAL ELEMENT



What is the name of this type of roof?

This is the last installment of "Name that Architectural Element," so make sure you get your answer in right away. The person with the first correct response receives a gift card.

Please email responses to office@berryarchitecture.ca.

Congratulations to Brittney Faust who correctly identified last month's architectural element as a pediment.