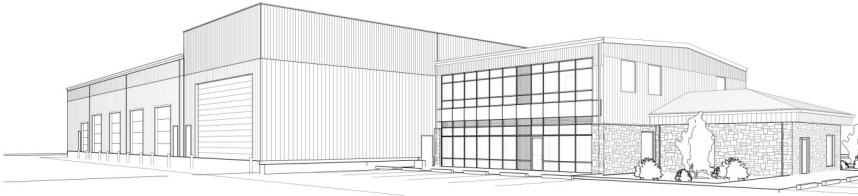


PRIME CONNECTION

Courtesy of Berry Architecture + Associates



Proform Undergoes Major Expansion



BUILDING PERSPECTIVE



Volume 1, Issue 7

We are excited to announce the start-up of a major renovation and expansion for Proform Concrete Services. Proform will be relocating their head office from the Brew Plaza to their maintenance site in the Burnt Lake Industrial Park. The project includes a complete renovation, addition, and modernization of the existing office and shop to a large, modern office building/maintenance facility. The maintenance space will be tailored to suit Proform's specialized equipment and requirements including a wash bay, heavy duty and light duty bays, an oil changing station, and the ability to service almost all over-sized equipment indoors. The centralization of operations and functional, specialized work spaces will meet the needs of this thriving business today and in the future.

Name That Project!



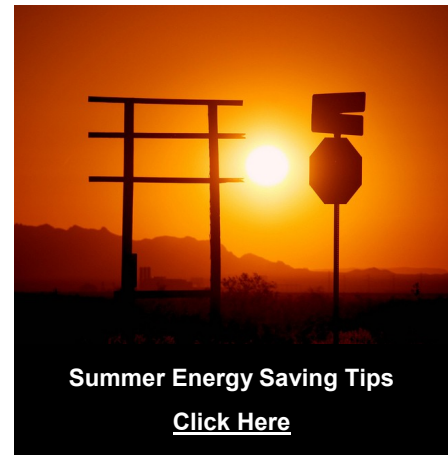
This exciting project required a complete renovation and modernization while remaining operational throughout the process and accommodating over 2,000 occupants. An innovative feature of the renovation was the creation of an open-air science park. Although this project was not LEED certified, green initiatives were implemented and the efficiency of the building was greatly increased by making the existing footprint more functional. We worked closely with different levels of government to ensure we were on budget, met all expectations, and developed a solid team to create a highly successful project. [Click here](#) to identify this project for your chance to WIN a gift certificate.

2012 Commuter Challenge Results

[Berry Architecture's Results](#)

[National Commuter Challenge Results](#)

berryarchitecture.ca



Summer Energy Saving Tips

[Click Here](#)

Berry Architecture Wellness Ride Update

Registration is still open for the Berry Architecture Wellness Ride on August 25th. Come on out and have a great time cycling 50 or 100k and raise money for two great causes—Canadian Mental Health Association and Central Alberta Brain Injury Society--at the same time. The ride starts with breakfast at 8:00 a.m. at the Berry Architecture office, 5218 -50th Ave, Red Deer. Mayor Morris Flewwelling and cycling enthusiast Adam George of the Red Deer RCMP will be speaking. Lunch will be provided in Delburne, where the 50k ride ends (don't worry, you get a van ride home!). The 100k group rides back to Red Deer. Rider support will be provided by Wipe Out Ski & Bike. There'll be lots of great prizes, including a Pandora bracelet, a cycling jersey, and gift cards. Let's beat last year's fundraising total of \$30,000! Register at wellnessride.ca.

[SIGN UP NOW FOR PRIME CONNECTION](#)

[UNSUBSCRIBE FROM PRIME CONNECTION](#)